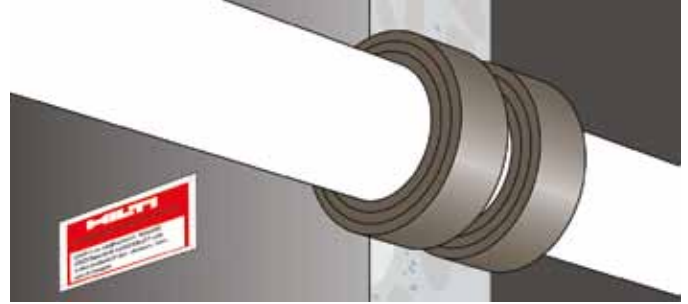


**Firestop wrap strip CP 648-E**



**Applications**

- Combustible pipe penetrations

**Advantages**

- Quick and easy closure without need for tools
- Easy to cut
- Fast installation
- Maximum flexibility



**Technical data**

<b>Base materials</b>	Concrete, Drywall, Masonry
<b>Expansion temperature (approx.)</b>	210 °C
<b>Intumescent</b>	Yes
<b>Storage and transportation temperature range</b>	-5 - 50 °C
<b>Application temperature range</b>	-5 - 50 °C
<b>Temperature resistance range</b>	-20 - 100 °C
<b>LEED VOC</b>	3.1 g/l
<b>Complementary products</b>	CP 606, CFS-S ACR, CP 620, CP 636
<b>Approvals</b>	ETA
<b>Can be painted</b>	No



Firestop Systems and Construction Chemicals

<b>Ordering designation</b>	<b>Sales pack quantity</b>	<b>Item number</b>
CP 648-E-W45/1.8"	1 pc	304310

Please visit our website for the latest item numbers and related products.